



Installation Instructions

Complete Set Active Sound incl. Soundbooster

v1.2 (05.07.2019)

Contents

1	Liability Exclusion	3
2	Copyright	4
3	General notes	4
4	Safety Instructions	5
5	Requirements for the intended use	5
6	Note	5
7	How to connect a cable to another	6
8	Note Cable Inscription/Color	7
9	Assembly Instructions	8
10	Assembly Note	9
11	Disassembly covering driver's side front	10
12	Connection ground / Assembly control units	12
13	Disassembly covering center console	13
14	Cable routing to the center console	15
15	Connection ignition plus and CAN bus	16
16	Assembly sound generator Variation 1	17
17	Assembly sound generator Variation 2	18
18	Cable routing in the back	19
19	Important Information Sound Booster	21
20	Software	22
21	Software	23
22	Software	24

1 Liability Exclusion

Dear Customer,

Our cable sets are developed according to the connection- and circuit diagrams of the corresponding car manufacturers. Before the serial production, the cable sets will be adjusted and tested on an original vehicle. Therefore, the integration into the vehicle electronics follows the guidelines provided by the car manufacturer. Our installation instructions correspond to what is common in the vehicle electric/electronic regarding the required pre-understanding and the accuracy of the description in text and picture. They have proven its worth in practice hundreds of times.

If you should experience any difficulties while installing one of our products, we are available to provide support via phone or email. Additionally, we offer you to execute the installation in our workshop in Bad Segeberg.

Costs, arising from third parties assigned with the installation of our products, are not being covered by us. We will only compensate the proven costs of the assembly and the costs of the disassembly of the defective product, if it turns out that there is an issue with our product. We limit the reimbursement of costs up to 110 Euro gross and reserve the right to verify the claim in our workshop in Bad Segeberg. The costs for shipping will be refunded if the claim is justified.

We made the experience, that every professional workshop that is equipped with the necessary diagnostic devices, the diagnostic software and the manufacturer's circuit diagrams, is able to find any possible defects in one of our products in a short period of time. The assembly and disassembly including troubleshooting the issue should therefore only take up to 60 minutes.

We also made the experience, that many professional workshops are not able to cope with the manufacturer's circuit diagrams and can't read common wiring schemes, which results in the calculation of several hours for the simplest installations. You will understand the fact, that we can neither take the risk of finding a reliable workshop for you, nor can we finance the training of the employees of your trusted workshop.

Costs, arising from purchasing missing parts or replacements for defective parts from other suppliers, are covered by us up to the amount that the subsequent delivery would have caused (saved expenses). According to the legal warranty law, there would be no reimbursement right, if there was no deadline for the subsequent fulfilling set or the deadline for a subsequent fulfilling hasn't expired.

That being said, if you have any problems during the installation or operation of one of our products call us, write us an email, send us the product or come by our workshop in Bad Segeberg with your vehicle. We are certain, that we can find a solution for any kind of concern.

Kind regards,

Your Kufatec GmbH & Co. KG Team

2 Copyright

Our installation and operation instructions, installation plans, software and other written and/or pictured documentations are protected by copyright.

The publication or distribution of these documentations is only permitted with a written approval of Kufatec GmbH & Co. KG.

3 General notes

While developing this product, your personal safety combined with the best operating service, modern design and an up-to-date production technique was especially taken into account.

Unfortunately, despite the utmost care injuries and/or damages might occur due to improper installation and/or use.

Therefore, please read the following instruction manual fully and thoroughly and keep it!

All articles of our production line pass through a 100% check – for your safety and security.

We reserve the right to carry out technical changes which serve the improvement at any time.

Depending on each product and purpose, it might be necessary to check each country's legal regulations before installing and starting it.

In case of warranty claims, the product has to be sent back to the seller in the original packaging with the attached bill of purchase and detailed defect's description. Please, pay attention to the manufacturers return requirements (RMA). The legal warranty directions are valid.

The warranty claim as well as the operating permission becomes invalid due to:

- unauthorized changes to the device or accessories which have not been approved or carried out by the manufacturer or its partners
- opening the casing of the device
- repairing the device on one's own
- improper use/operation
- brute force to the device (drop, willful damage, accident etc.)

During the installation, please pay attention to all safety relevant and legal directions. The device should only be installed by trained personnel or similarly qualified people.

In case of installation problems or problems concerning the functionality of the device, limit the time to approx. 0,5 hours for mechanical or 1,0 hours for electrical troubleshooting.

To avoid unnecessary costs and time-loss, send in an immediate support-request, via the Kufatec-contact-form (<http://www.kufatec.de/shop/de/infocenter/>).

In case of, let us know the following:

- Car chassis number/vehicle identification number
- Five-digit part number of the device
- Exact description of the problem
- Steps you have taken to solve the problem

4 Safety Instructions

The installation should only be performed by trained personnel. Only perform installations while in a voltage-free state. For example, disconnect the battery. Please pay attention to the instructions provided by the manufacturer.

- Never use bolts or nuts from the car's safety devices for installation. If bolts or nuts from the steering wheel, brakes or other safety devices are used for installation of the device, it may cause an accident.
- Use the device with a DC 12V negative ground car. This device cannot be used in large trucks which use a DC 24V battery. If it is used with a DC 24V battery, it may cause a fire or accident.
- Avoid installing the device in places that would restrict you from driving safe or where it could damage the car's other fittings.
- This device should only be used in combination with the mentioned vehicles. Only connections described within this instructions guide are allowed or required to use for installation.
- For damages caused by faulty installation, unsuitable connections or inappropriate vehicles, Kufatec GmbH & Co. KG assumes no liability.
- We advise you that these devices process data from the MOST – protocol of the vehicle. As the supplier of this device we don't know the overall system you are working with. If your device causes damage, due to other changes made to the vehicle, Kufatec GmbH & Co. KG assumes no liability.
- Kufatec GmbH & Co. KG supplier does not guarantee the use of the product for changes within a new vehicle series.
- If the car manufacturers don't agree with the installation of our device by reason of warranty, Kufatec GmbH & Co. KG assumes no liability. Please, check conditions and warranty before you begin the installation.
- Kufatec GmbH & Co. KG reserves the right to change the device specifications without notice.
- Subject to errors and changes.

5 Requirements for the intended use

Only use this device in its intended area.

In case of unprofessional installation, improper use or modification, the permission for the operation and the warranty claim will expire.

6 Note

Make sure that there's enough space at the described position. If there is no space please cancel the installation and contact our technical support.

The use of a sound booster is not permitted without registration in the vehicle papers, in the area of the german StVZO. The noise emission of the vehicle is increased by this retrofit. The regulations of the StVZO must be observed. It is therefore recommended to ask for a specific registration option at the responsible TÜV/DEKRA office before retrofitting. Outside Germany, please observe the laws on vehicle licensing applicable in your country.

7 How to connect a cable to another

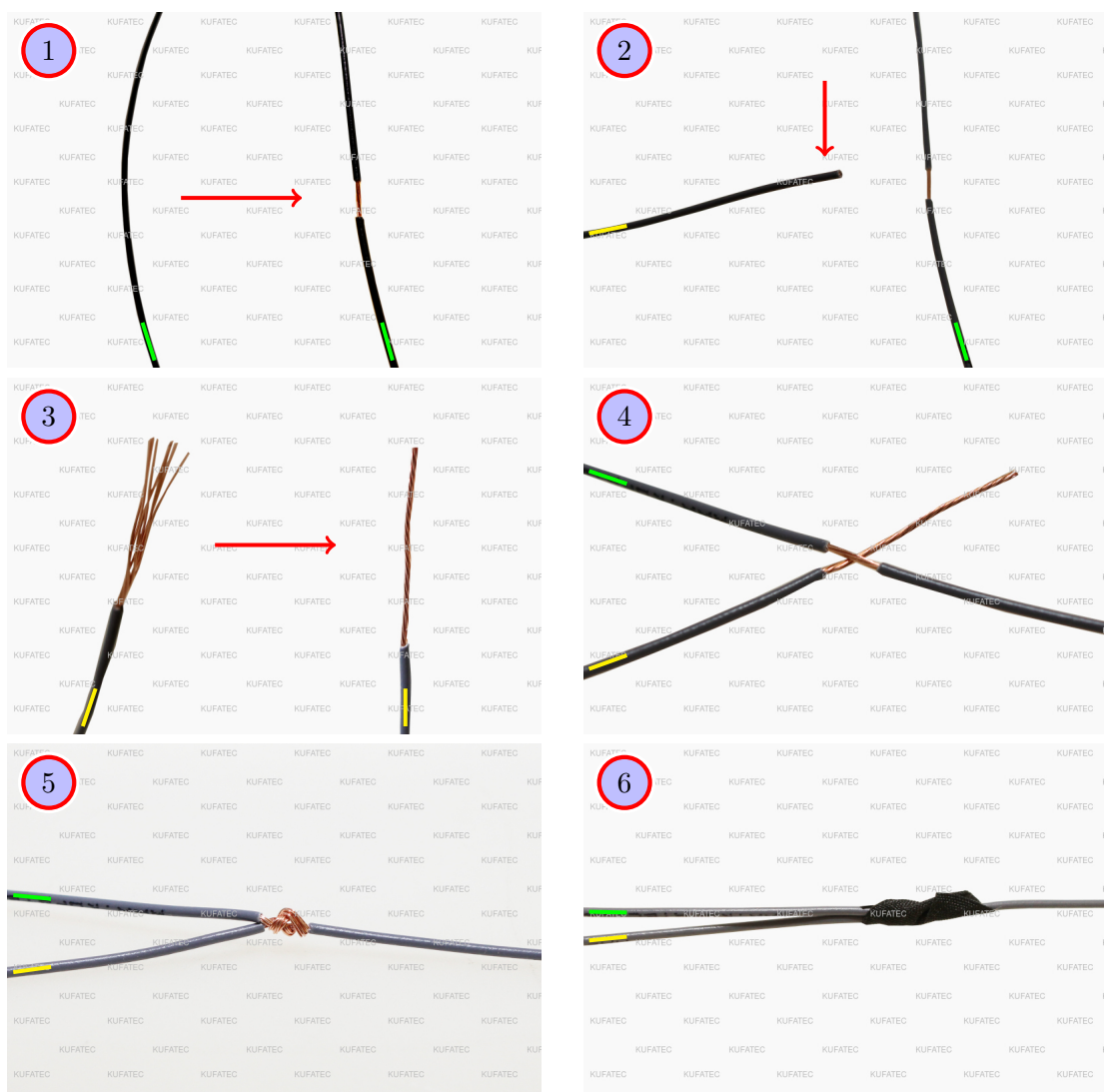


Figure 1: How to connect a cable to another

Table 1: How to connect a cable to another

No.	Work step	Note
1	Take the cable of the vehicle, to which you want to connect, (green marked here) and strip the insulation at one point with a suitable tool (cable stripper/cutter knife).	
2	Now take the cable of the cable set, which you want to connect, (yellow marked here) and strip the insulation at the end.	
3	Twirl the wires of the stripped cable together.	
4	Place the end of the cable you want to connect under the stripped point of the cable of the vehicle...	
5	... and wrap the cable you want to connect around the cable of the vehicle. Solder the connection professionally.	
6	Lastly, stick insulating tape around the connection point. Make sure that the isolation is put onto the connection professionally to prevent corrosion.	

8 Note Cable Inscription/Color



Figure 2: Cable Inscription

If the cable set consists of colored cables, connect the cables according to the color. If all cables of the cable set have the same color, connect the cables according to the cable inscription.

9 Assembly Instructions

The following illustration shows the cable routing as well as the position of the individual components.

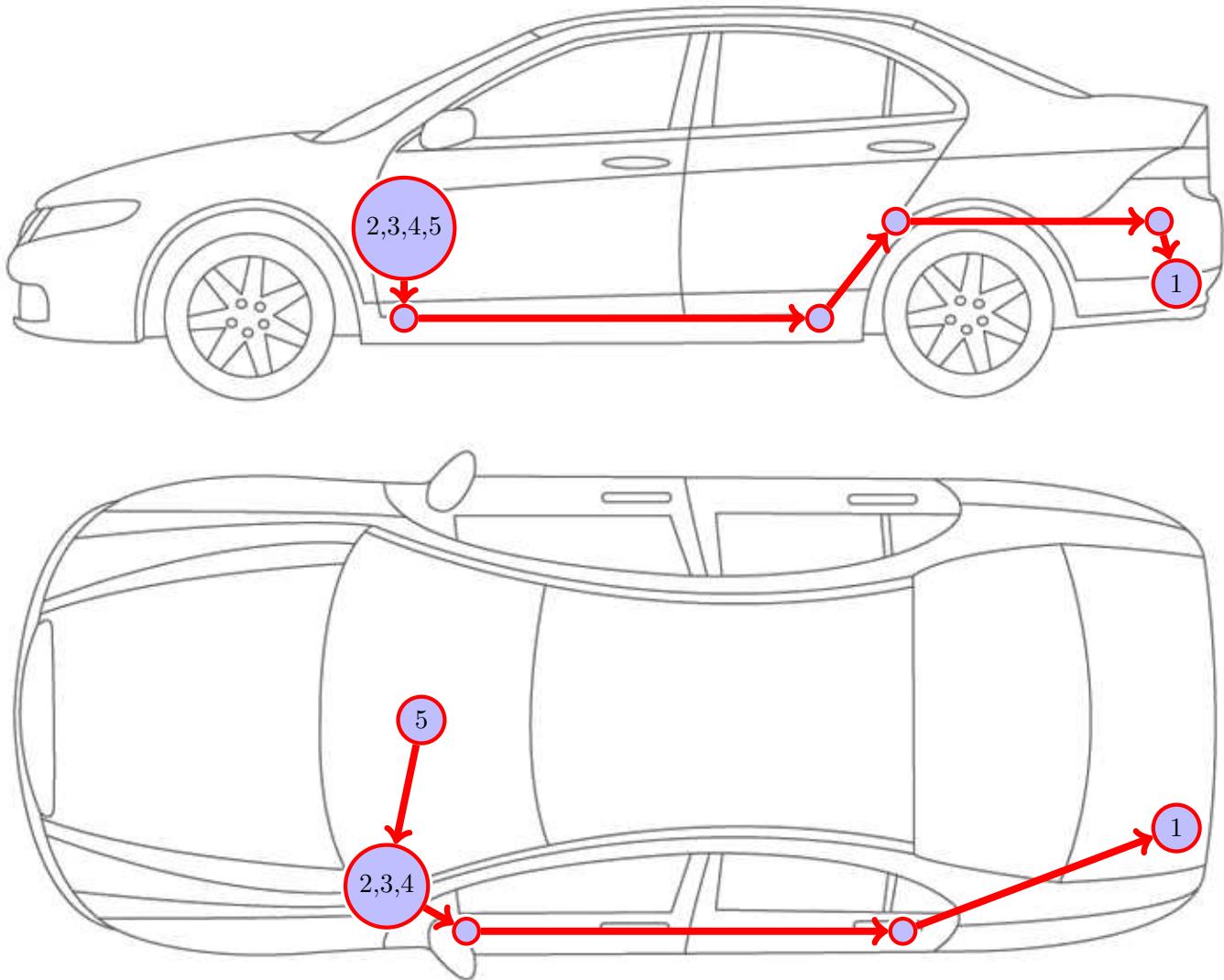


Figure 3: Vehicle Overview

- 1 External sound generator incl. holder
- 2 Control unit for the sound generation
- 3 Sound Booster Pro (Module)
- 4 Button
- 5 Connection

Please be aware, that this overview is only for **illustration purposes**. Always lay the cable set in the **most convenient and shortest way** possible. For a detailed description of the cable routing, please refer to the relevant sections of the following manual.

10 Assembly Note

Important note for the assembly

- The vehicle used for the assembly instruction was a **Peugeot 508 GT**. We would like to point out, that the disassembly of the individual parts can vary depending on the type of vehicle. Please make sure to keep that in mind.

Notes for assembling the vehicle

- Before you start assembling the vehicle, the system must first be tested for proper function.

11 Disassembly covering driver's side front

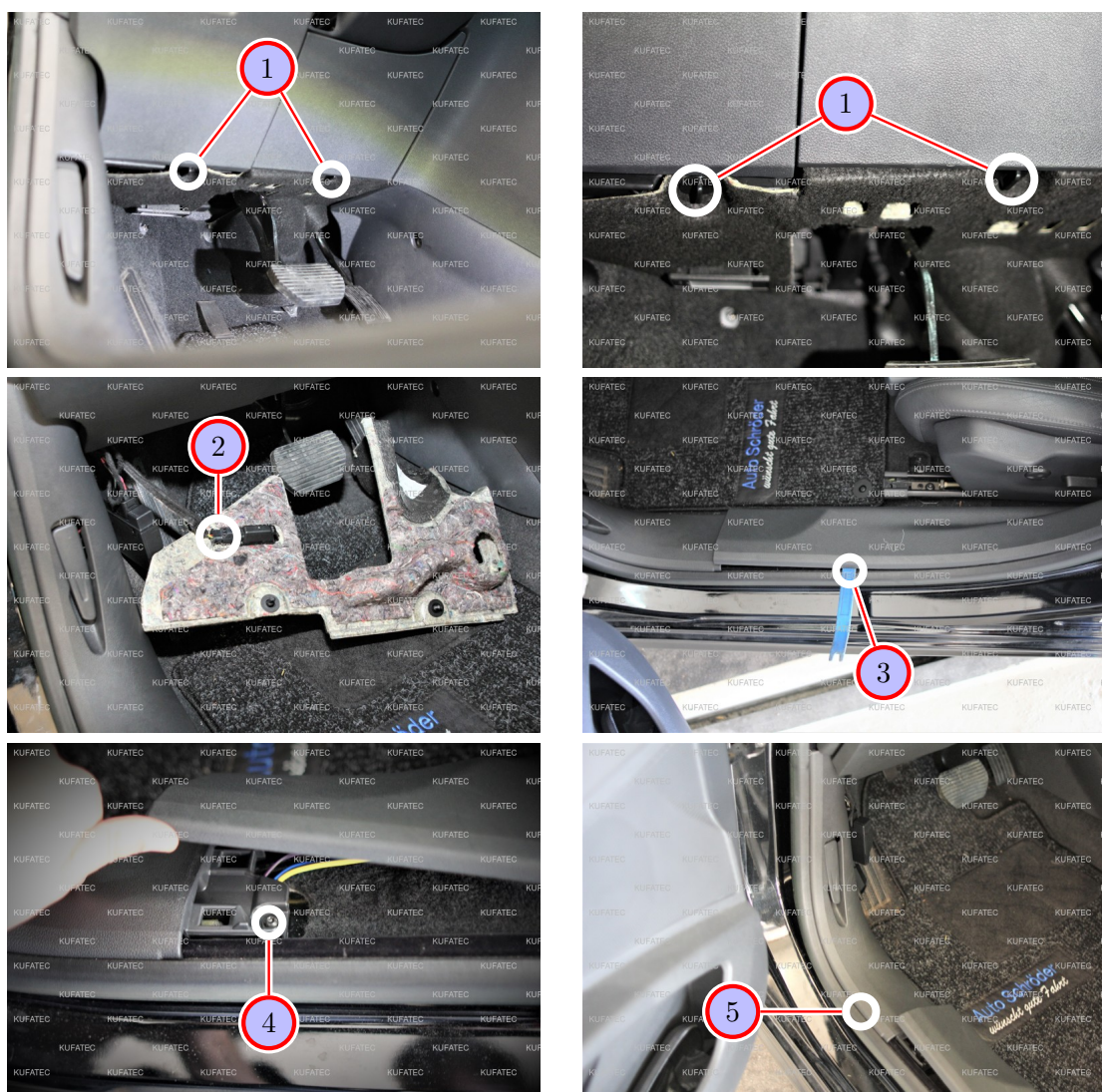


Figure 4: Disassembly covering driver's side front

Table 2: Instructions to disassemble the covering on the driver's side in the front

No.	Work step	Note
1	Loosen both of the marked wing screws and pull the lower covering of the dashboard down.	
2	Loosen the marked plug of the footwell lighting and remove the covering completely.	
3	Loosen the sill trim by using an assembly lever.	
4	Remove the marked screw of the lower A-column covering.	1xT20
5	Remove the lower A-column covering by using an assembly lever.	

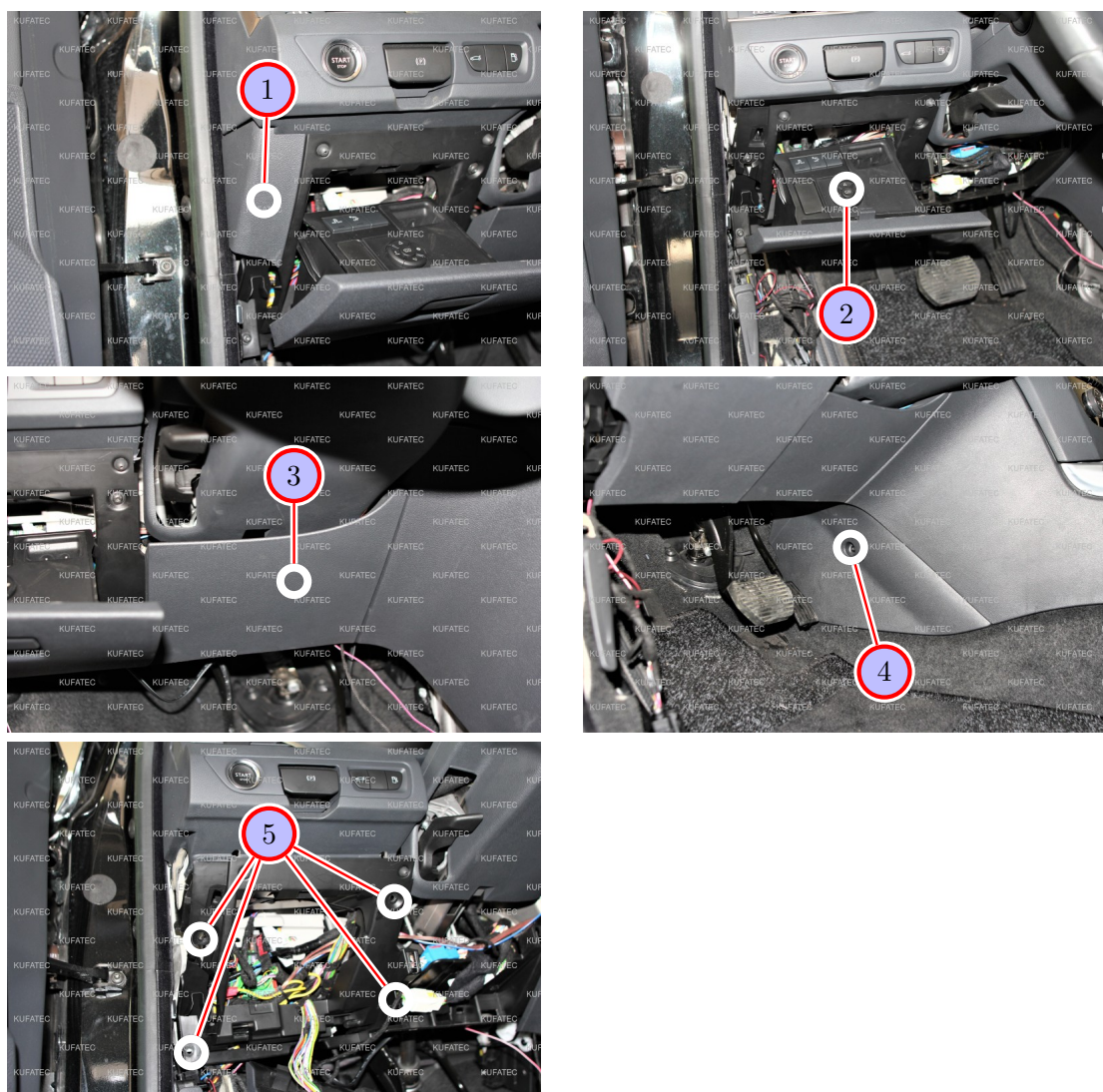


Figure 5: Disassembly covering driver's side front

Table 3: Instructions to disassemble the covering on the driver's side in the front

No.	Work step	Note
1	Remove the left part of the dashboard covering.	
2	Remove the compartment by opening it and pulling it forward. The compartment is simply clipped in.	
3	Remove the coverings under the steering column by pulling it upwards.	
4	Remove the marked screw of the lower center console covering and remove it completely afterwards.	1xT20
5	Remove the marked screws from the front covering at the dashboard and pull it forward carefully.	4xT20

12 Connection ground / Assembly control units

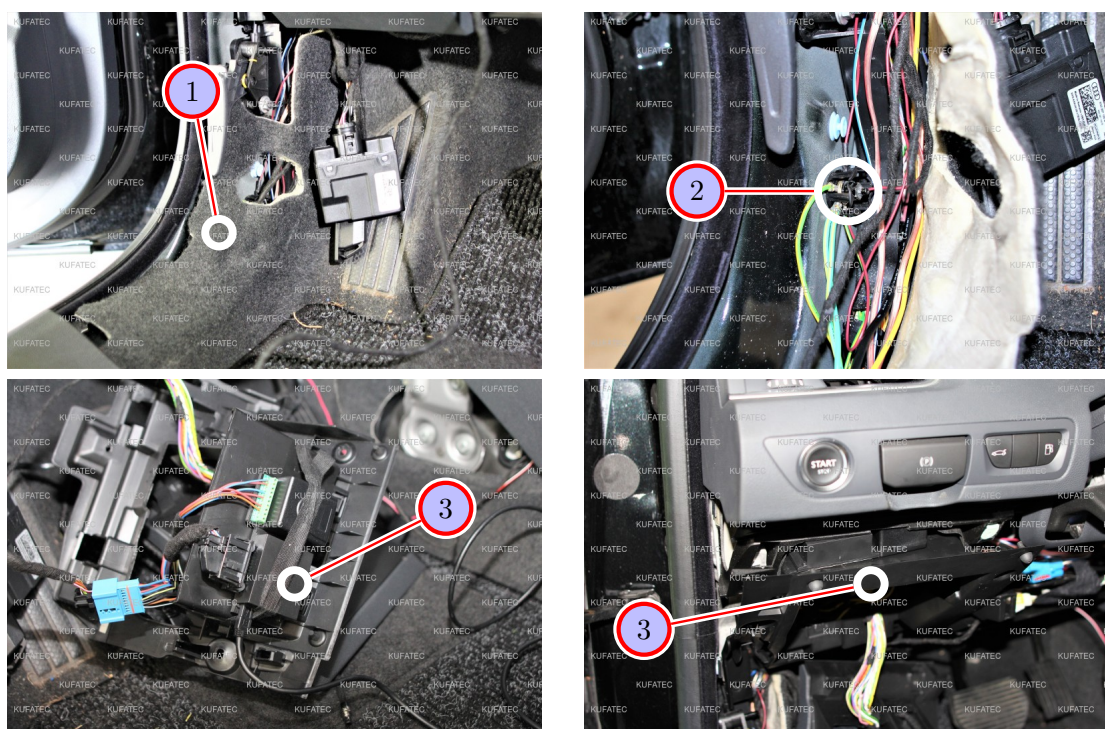


Figure 6: Connection ground / Assembly control units

Table 4: Instructions to connect ground / assemble the control units

No.	Work step	Note
1	Remove the carpet at the A-column, in order to reach the ground pin.	
2	Connect the ground cable to the marked ground pin at the A-column.	1x10er nut
3	Assemble the module and the control units and assemble the cover at the marked position.	
	Important: Only connect the plugs of the module and the control unit after complete connection and assembly of the cable set.	

13 Disassembly covering center console

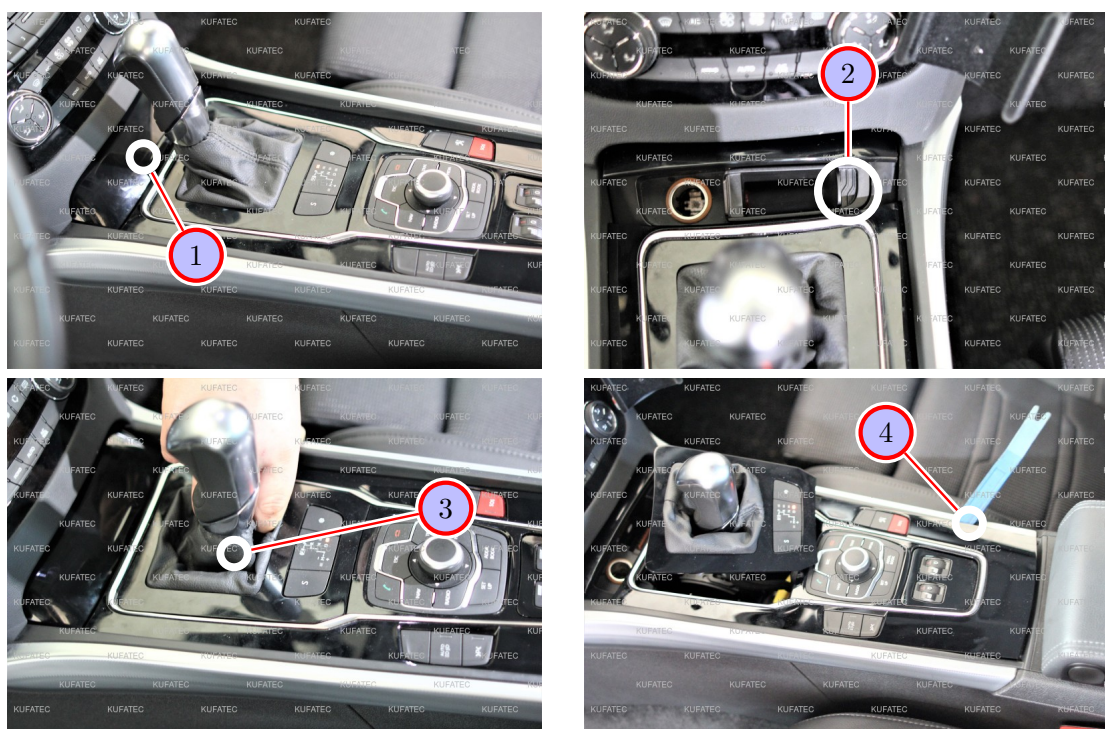


Figure 7: Disassembly covering center console

Table 5: Instructions to disassemble the covering of the center console

No.	Work step	Note
1	Open the covering to the ashtray.	
2	Remove the covering above the OBD II socket. Pull the marked side upwards.	
3	Remove the covering around the gear lever by pulling it from the inside upward.	
4	Now loosen the center console by hand carefully and lift the covering out by using an assembly lever.	

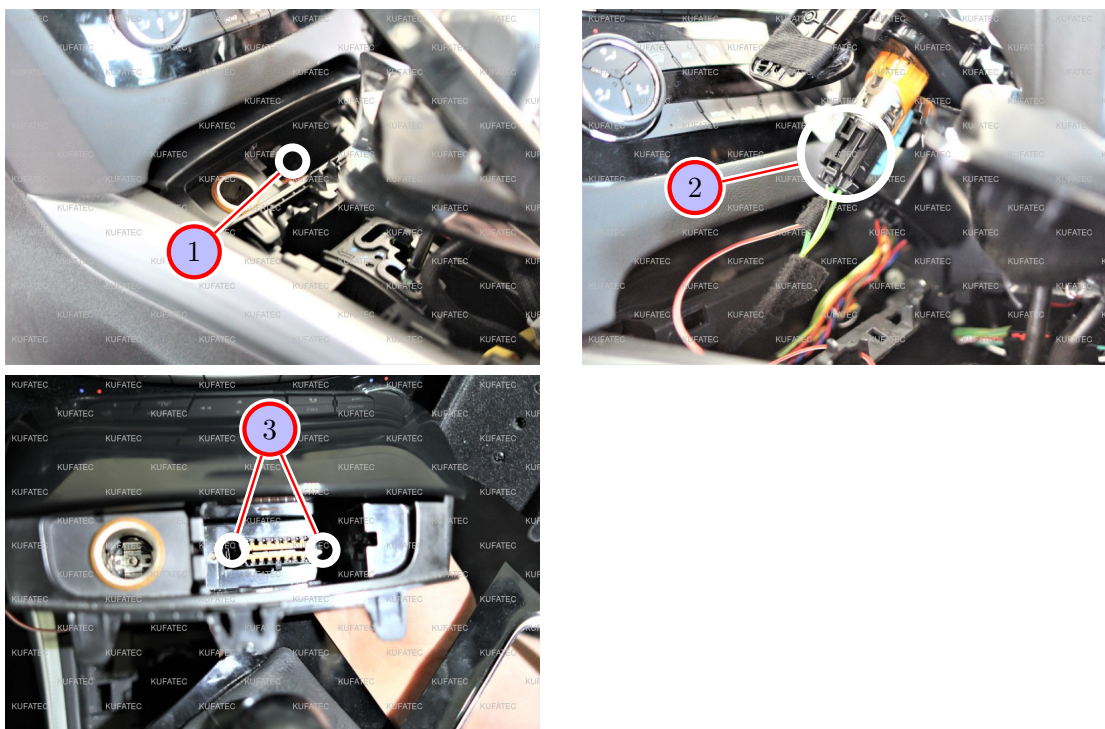


Figure 8: Disassembly covering center console

Table 6: nstructions to disassemble the covering of the center console

No.	Work step	Note
1	Pull the ashtray upwards.	
2	Loosen the plug of the cigarette lighter.	
3	Loosen the OBD-socket by unlocking, pressing left and right and then pulling it out downwards.	

14 Cable routing to the center console

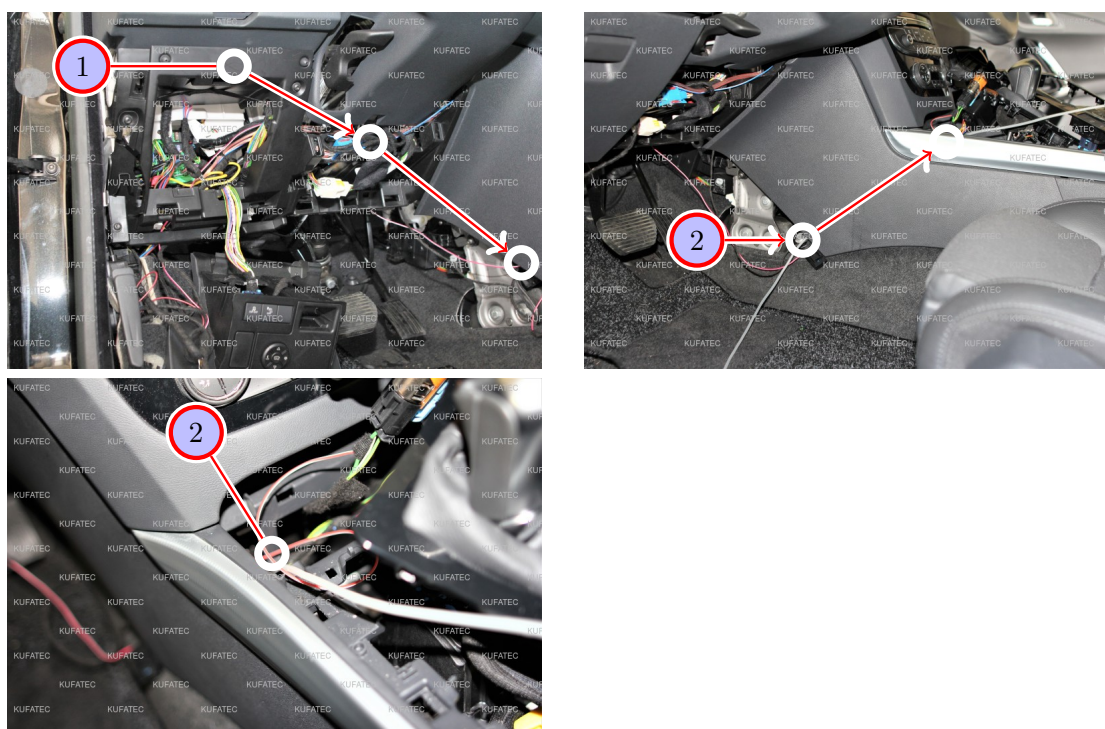


Figure 9: Cable routing to the center console

Table 7: Instructions to route the cables to the center console

No.	Work step	Note
1	Lay the cables for ignition plus and CAN High + Low in the dashboard to the center console.	
2	Insert the cable at the marked position into the center console.	

15 Connection ignition plus and CAN bus

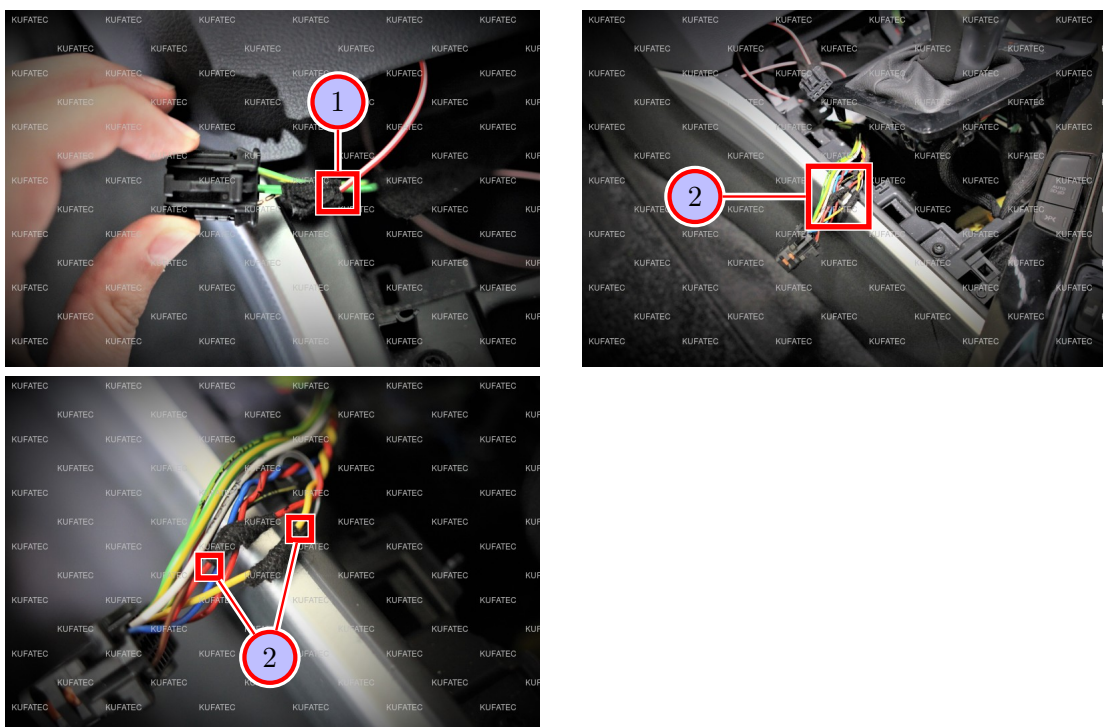


Figure 10: Connection ignition plus and CAN bus

Table 8: Instructions to connect ignition plus and CAN bus

No.	Work step	Note
1	Connect the cable for ignition plus (red/white) to PIN 2 (cable color at the plug = green) of the black plug at the cigarette lighter.	
2	Connect CAN High + CAN Low to the marked OBD-plug in the center console as follows (see notes page 6):	
	- CAN High (black/white) to PIN 6 (cable color at the plug = yellow)	
	- CAN Low (black/yellow) to PIN 14 (cable color at the plug = red)	

16 Assembly sound generator Variation 1

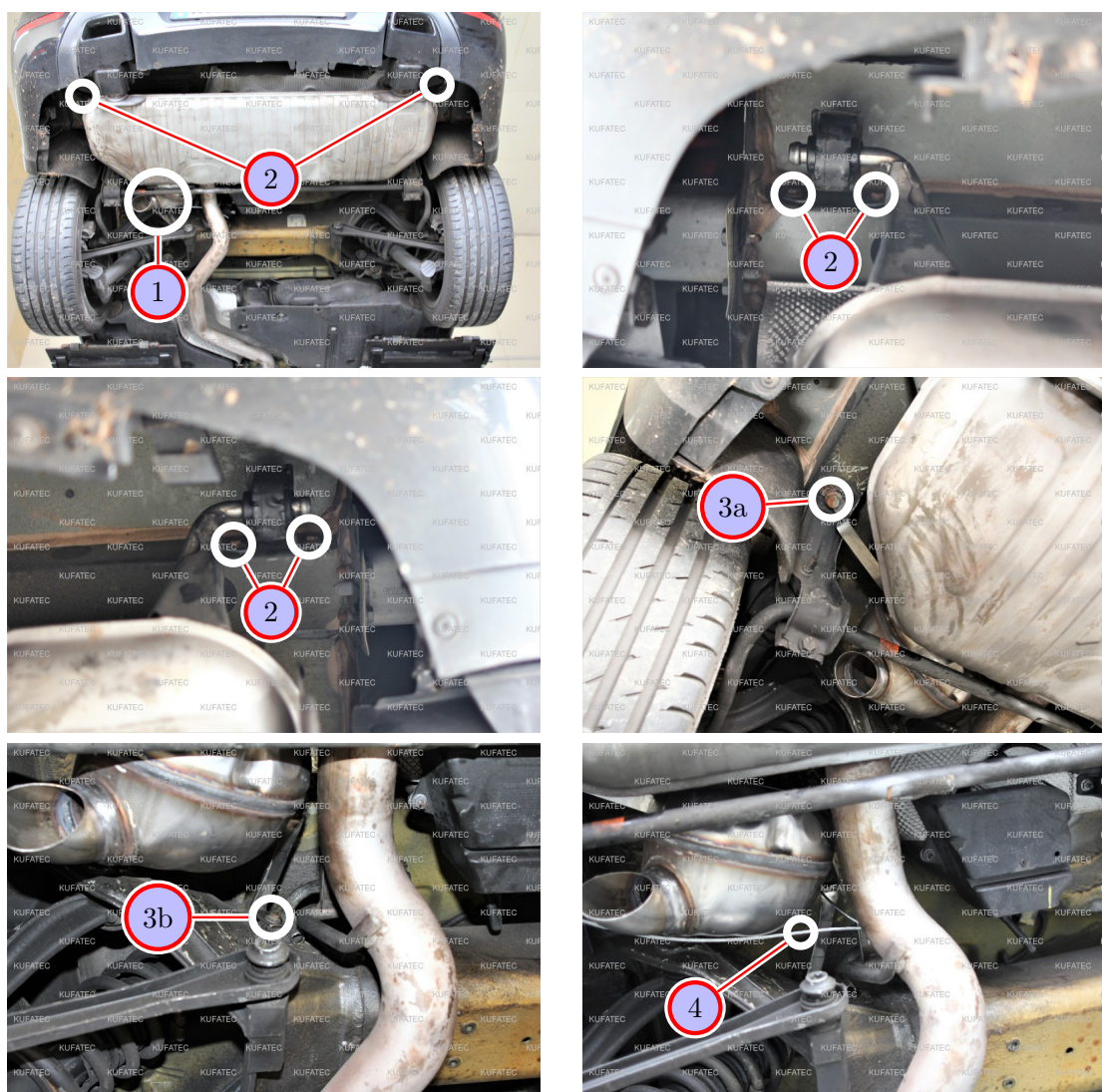


Figure 11: Assembly sound generator Variation 1

Table 9: Instructions to assemble the sound generator

No.	Work step	Note
1	Attachement position of the sound generator.	
2	Loosen the two fastening screws of the holder for the muffler on the right and on the left.	2x10er nut
3a	Loosen the rear screw of the stabilizer and use it to attach the sound generator.	1x10er nut
3b	Loosen the front screw of the stabilizer and use it to attach the sound generator.	1x18er nut
4	Attach the safety steel cable to the sound generator as well as to the vehicle.	

17 Assembly sound generator Variation 2

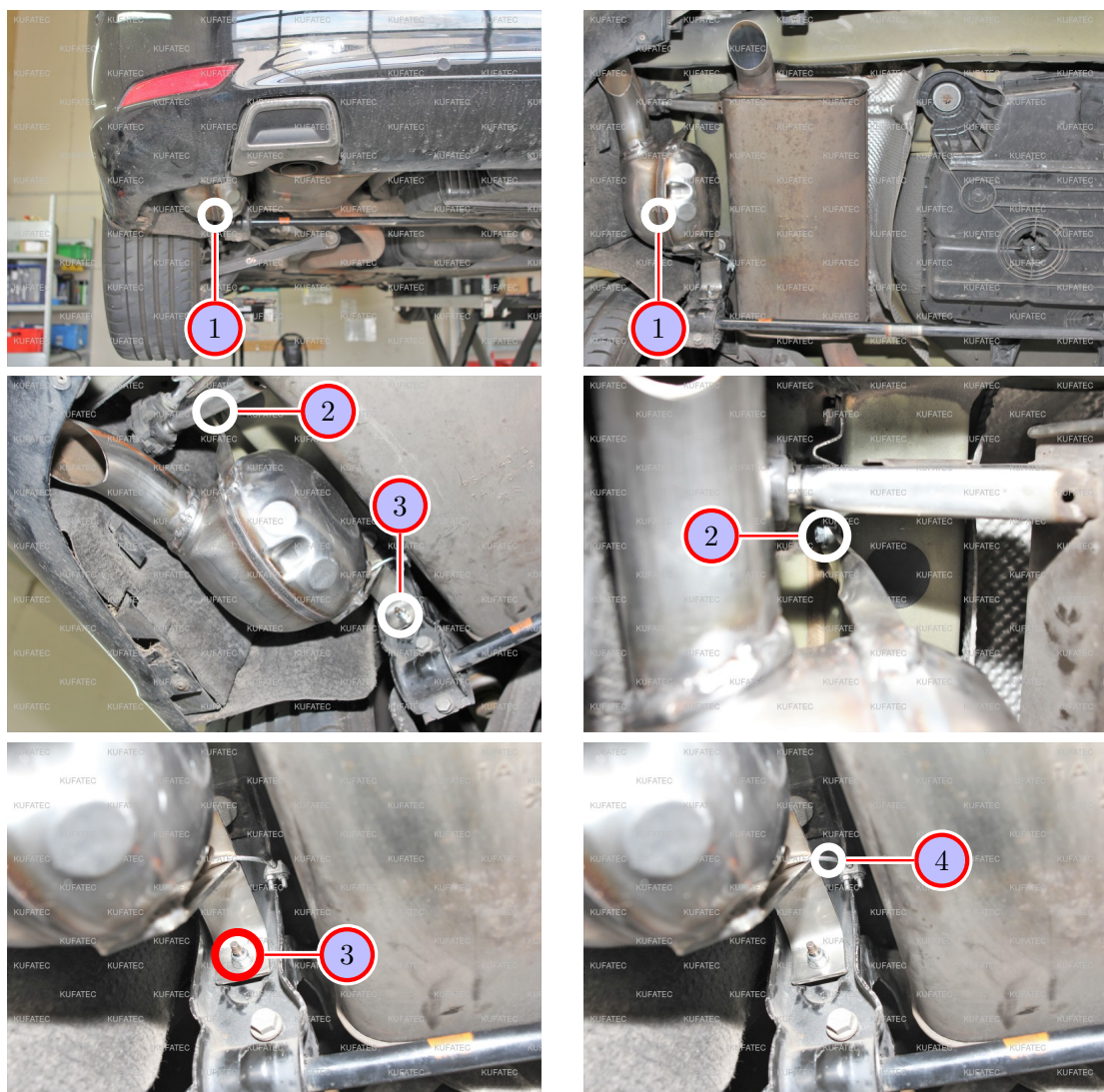


Figure 12: Assembly sound generator Variation 2

Table 10: Instructions to assemble the sound generator

No.	Work step	Note
	If your vehicle is equipped with an AdBlue tank, assemble the sound generator as follows:	
1	Attachment position of the sound generator.	
!	The screws of the stabilizer will be used to attach the sound generator.	
2	Loosen the marked screw at the exhaust rubber and attach the bent holder here by using an extended screw (not included in the scope of delivery).	1xSW10
3	Attach the second holder onto the marked bolt at the stabilizer and attach the holder here by using another screw (not included in the scope of delivery).	1xSW13
4	Attach the safety steel cable to the sound generator as well as to the vehicle.	

18 Cable routing in the back

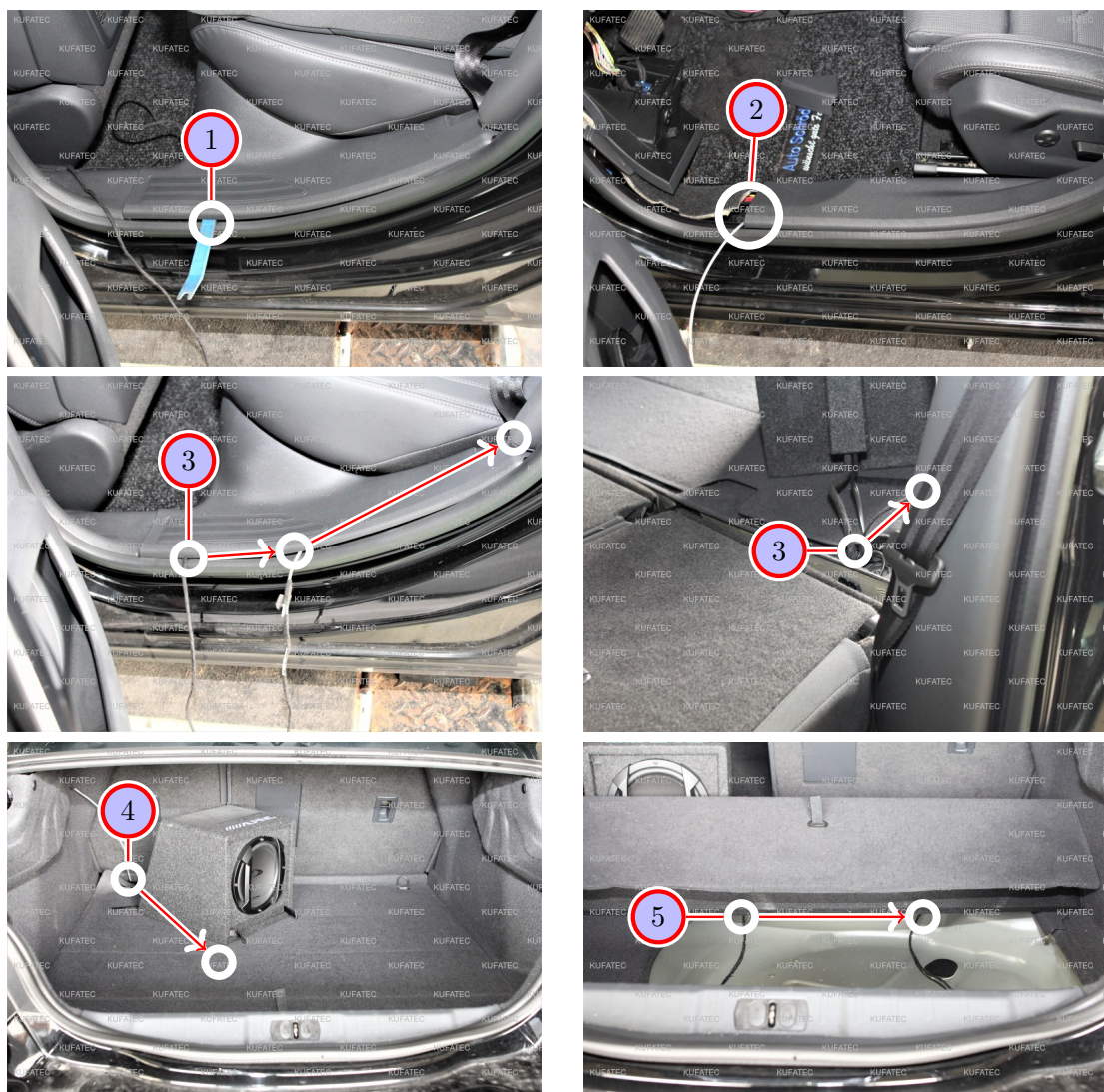


Figure 13: Cable routing in the back

Table 11: Instructions to route the cables in the back

No.	Work step	Note
1	Loosen the sill trim in the front by using an assembly lever.	
2	Lay the cable for the sound generator along the sill trim to the B-column.	
3	Pull the cable out from behind the B-column covering and lay it under the back seat into the trunk afterwards.	
4	Lay the cable under the trunk covering to the marked rubber grommet in the spare wheel recess.	

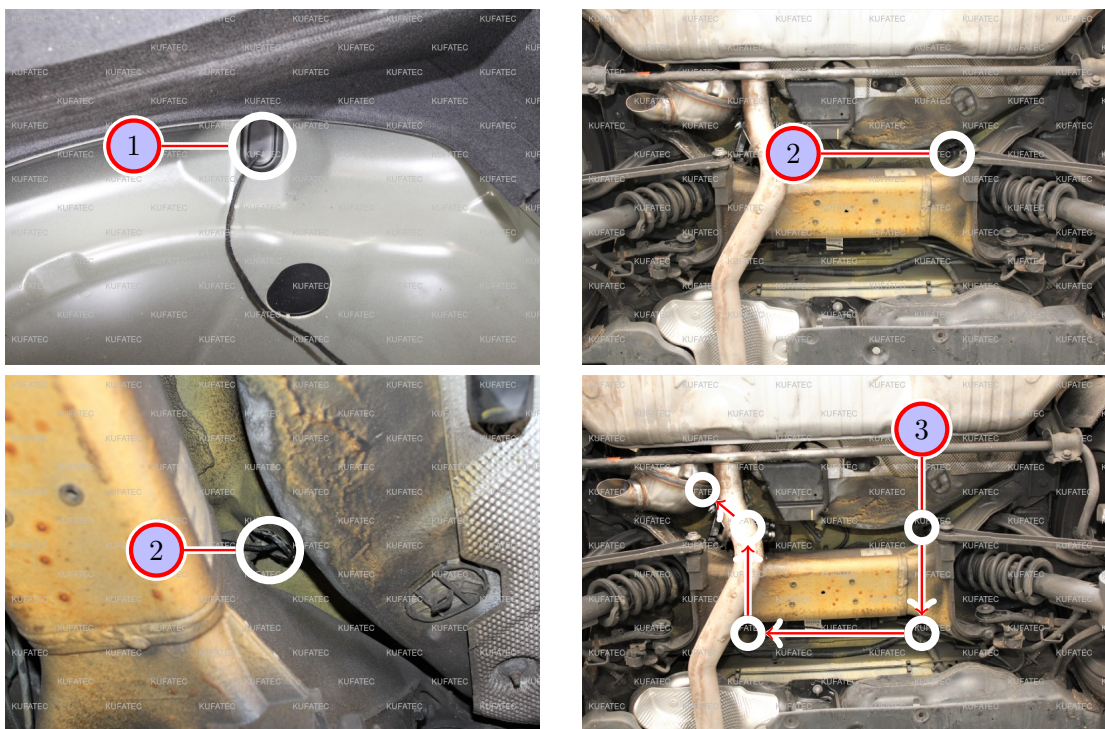


Figure 14: Cable routing in the back

Table 12: Instructions to route the cables in the back

No.	Work step	Note
1	Route the cable through the rubber grommet all the way down.	
2	Pull the cable out at the marked spot.	
3	Lay the cable onto immovable parts underneath the vehicle along the marking to the sound generator.	
!	If the sound generator is assembled as shown in Variation 2, the cables has to be pulled through a little further.	

19 Important Information Sound Booster

Please use suitable screws that can withstand high loads of impact to attach the sound generator. In order to avoid loosening of the screws due to the vibration, please secure the screws with appropriate factory material e.g. threadlock. Please additionally check the stability of the Sound Booster regularly and if necessary retighten the screws. In case of non-compliance we do not assume liability for possible damages.

After a successful installation we recommend to cover the sound generator with a zinc spray. Make sure that you cover the opening of the sound generator so that the zinc spray can't get inside the sound generator.

As additional safety the delivered steel cable and the retaining clips have to be attached to the Sound Booster as well as at a suitable position to the car. This safety cable is an additional security should the tightening screws be released due to the vibration.

20 Software

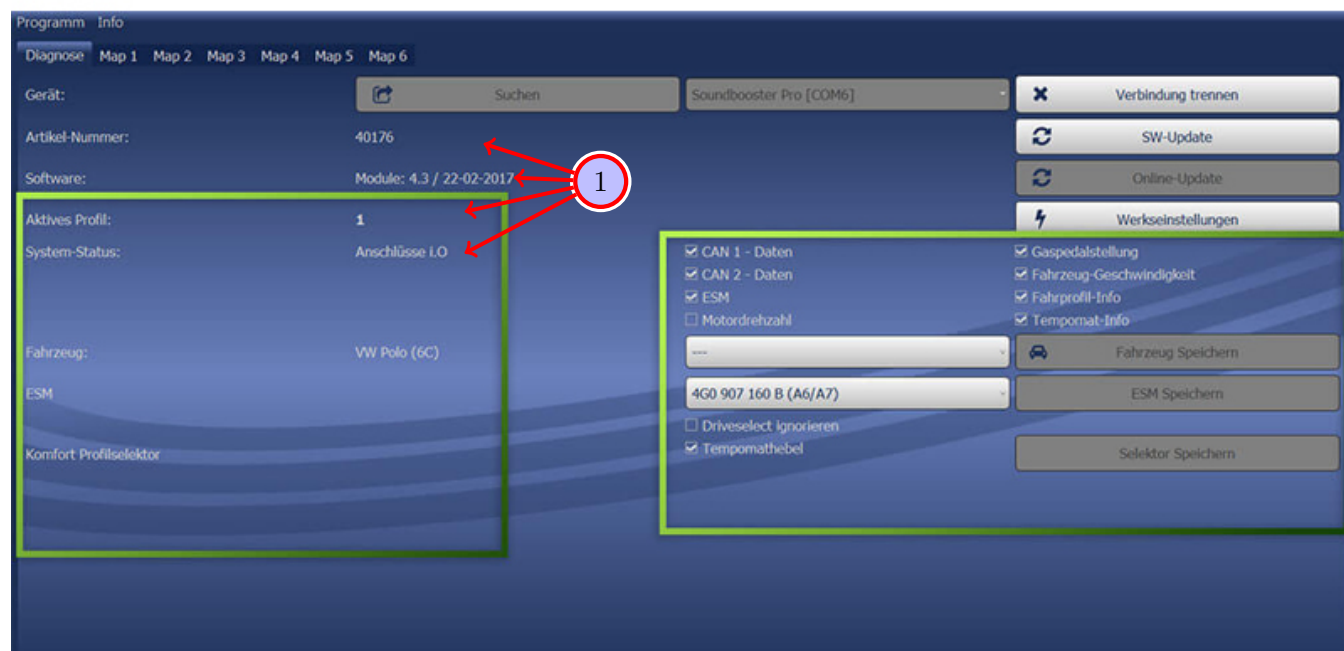


Figure 15: Software

Table 13: Notes for the software

No.	Work step	Note
1	If the system does not work after the installation, please check if the system was installed correctly by having a look on the following link: https://www.sound-booster.com/en/debugging.html . Our Sound Booster Software for PC / Mac should be used for the commissioning or further debugging:	
	Step 1: Download the appropriate software via the following link: https://www.sound-booster.com .	
	Step 2: Turn the ignition of the vehicle on and only then connect the PC / Mac with a USB-cable to our module. It is important to check beforehand if plus and minus are connected correctly. If this is not the case, it could result in a damage to the computer or to the control unit.	
	Step 3: Start the downloaded software and click on search first and then on connect. You will be automatically forwarded to the diagnosis site, on which you can see the following things at a glance:	
	Software: Software version / creation date	
	Active profile: The actually activated profile is indicated here.	
	Vehicle: The automatically identified vehicle is indicated here.	
	System status: Here you can tell, if the connections are correct.	

21 Software

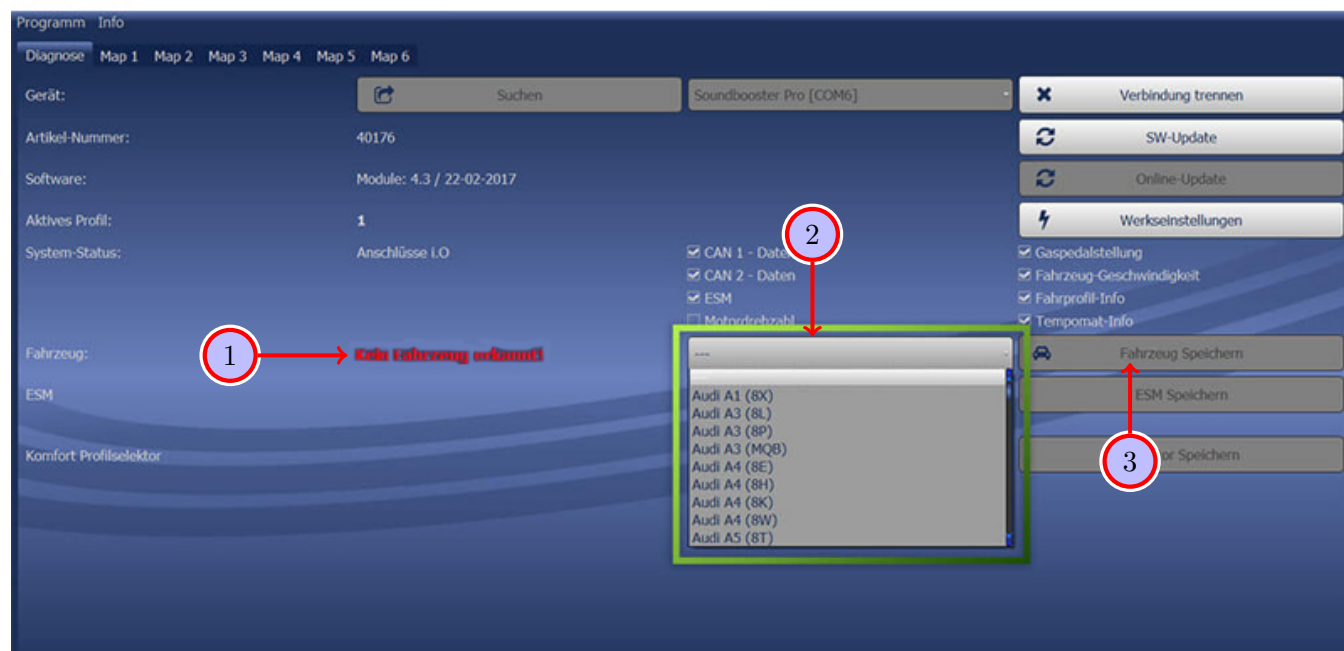


Figure 16: Software

Table 14: Notes for the software

No.	Work step	Note
1	If no current vehicle is identified, you have to select the vehicle via the manual selection as follows:	
2	Open the dropdown-menu, search for your vehicle and select it.	
3	Click on Save Car to permanently save the vehicle to the module.	
	If you don't find your vehicle in the list, it might be necessary that the software has to be adapted to your vehicle. In that case, please contact us via e-mail: info@kufatec.de or by phone: +49 (0) 4551 / 80 810 888. We will make an appointment with you, where we will adapt the software to your vehicle per Team Viewer (remote maintenance).	

22 Software

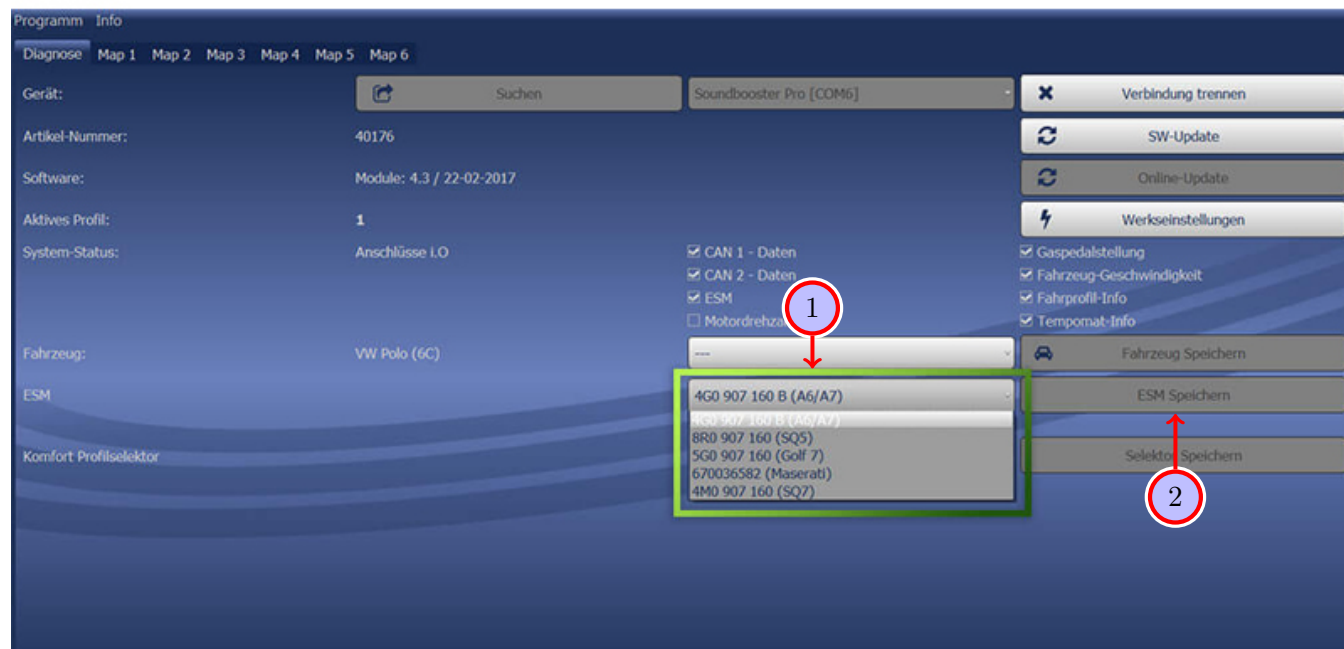


Figure 17: Software

Table 15: Notes for the software

No.	Work step	Note
1	You also need to check if the right ESM is selected in our software: Open the dropdown-menu, search for the correct ESM and select it.	
2	Click on Save ESM to permanently save the ESM to the module.	
3	For example, if you ordered a complete set with a Audi control unit you need to select the ESM 4G0 907 160 B (A6/A7) . If you installed the Maserati control unit instead of the Audi control unit you need to select the ESM 670036582 (Maserati) . If the system does not work after all please get in contact with us via e-mail: info@kufatec.de or by phone: +49 (0) 4551 / 80 810 888. We will check the issue as soon as possible.	

List of Figures

1	How to connect a cable to another	6
2	Cable Inscription	7
3	Vehicle Overview	8
4	Disassembly covering driver's side front	10
5	Disassembly covering driver's side front	11
6	Connection ground / Assembly control units	12
7	Disassembly covering center console	13
8	Disassembly covering center console	14
9	Cable routing to the center console	15
10	Connection ignition plus and CAN bus	16
11	Assembly sound generator Variation 1	17
12	Assembly sound generator Variation 2	18
13	Cable routing in the back	19
14	Cable routing in the back	20
15	Software	22
16	Software	23
17	Software	24

List of Tables

1	How to connect a cable to another	6
2	Instructions to disassemble the covering on the driver's side in the front	10
3	Instructions to disassemble the covering on the driver's side in the front	11
4	Instructions to connect ground / assemble the control units	12
5	Instructions to disassemble the covering of the center console	13
6	Instructions to disassemble the covering of the center console	14
7	Instructions to route the cables to the center console	15
8	Instructions to connect ignition plus and CAN bus	16
9	Instructions to assemble the sound generator	17
10	Instructions to assemble the sound generator	18
11	Instructions to route the cables in the back	19
12	Instructions to route the cables in the back	20
13	Notes for the software	22
14	Notes for the software	23
15	Notes for the software	24